



Pyrok dv's[®]
... a mark of quality

Total Reliability in Power System Protection, Monitoring & Control

ISO 9001-2015

EARTH LEAKAGE RELAY

WITH CORE BALANCE CURRENT TRANSFORMER IEEE DEVICE CODE:64

→ FEATURES:

- ▶ Consistent reliability with Accuracy
- ▶ Fixed or variable sensitivity available from 30mA to 30A
- ▶ LED display of visual indication of fault through Leakage Status Bar
- ▶ Detection of CBCT open(In Digital μ C based models only)
- ▶ Continuous real time monitoring and display of leakage current (In μ C based models only)
- ▶ LCD/LED display of visual indications of fault
- ▶ Test & Reset facility for testing the healthiness of the relay
- ▶ High barrier connector at rear end for easy termination and safety standard
- ▶ True RMS measurement of leakage current
- ▶ Trip Circuit Failure indication
- ▶ Tamper proof Polycarbonate cover
- ▶ Serial RS485 Communication port with Modbus Communication Protocol(optional)
- ▶ External Test, Reset, Fault & Healthy indication suitable for Mining application
- ▶ RTC & Trip History available in numerical relays



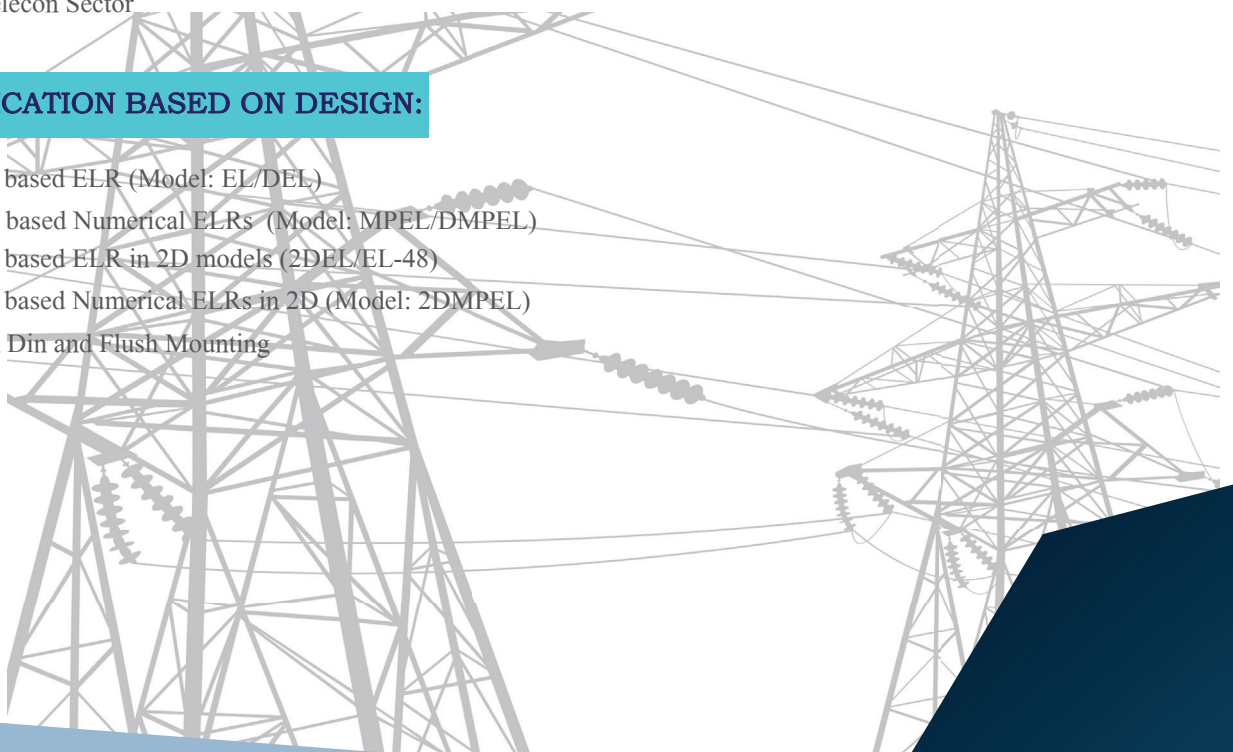
→ APPLICATIONS:

- ▶ Earth Leakage Relay protection for Feeders/Motors/Generators/Transformers
- ▶ Protection for hazardous sensitive environments like Oil Refineries/Cement Plant/Steel Plant and General Electrical Distribution
- ▶ Protection for Mining and Control Engineering
- ▶ Software and Telecon Sector

→ CLASSIFICATION BASED ON DESIGN:

- ▶ Microprocessor based ELR (Model: EL/DEL)
- ▶ Microcontroller based Numerical ELRs (Model: MPEL/DMPEL)
- ▶ Microcontroller based ELR in 2D models (2DEL/EL-48)
- ▶ Microcontroller based Numerical ELRs in 2D (Model: 2DMPEL)

*Note: Available in Din and Flush Mounting





SPECIFICATIONS:

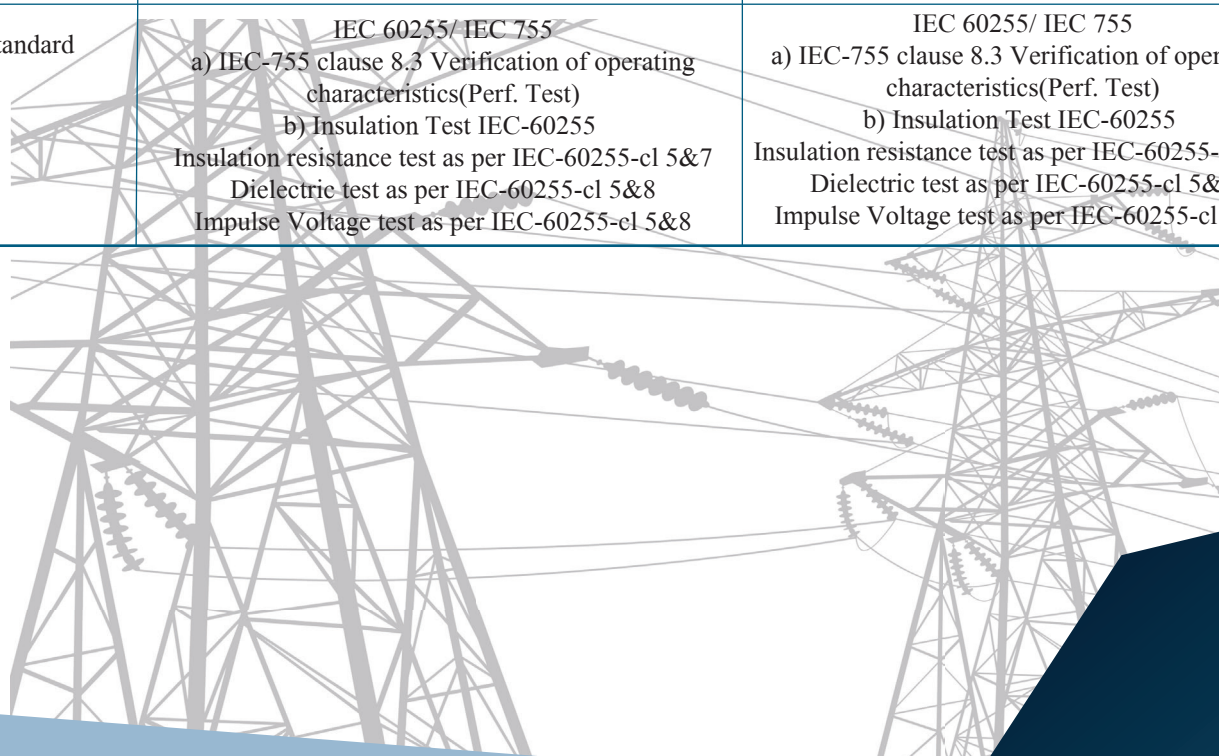
PARAMETERS	SOLID STATE EARTH LEAKAGE RELAY	DIGITAL EARTH LEAKAGE RELAY
Current Setting Range	Setting Range: EL-01: 1-8A EL-02: 30-300mA EL-03: 300-3000mA EL-04: 1-4A EL-05: 30-3000mA EL-06: 1-10A EL-07: 4-12A ELSPL52: 50-2000mA ELSPL-01: 300mA-30A ELSPL-02: 30mA-30A	Setting Range: MPEL-01: 300-12000mA MPEL-02: 30-3000mA MPELSPL-01: 300mA-30A MPELSPL-02: 30mA-30A
Tripping Time	Variable Time Delay: 0.15-3.0sec Fixed Time Delay: 100ms,500ms,1sec & 3sec	Variable Time Delay: 0.05sec - 5sec (Step Size: 0.05sec)
Auxiliary Voltage	85-275V AC/DC, 415V & 550V AC/DC, 50/60Hz	85-275V AC/DC, 415V & 550V AC/DC, 50/60Hz
Communication with Modbus Protocol RS485	NA	Device ID: 1-31, Baud Rate: 9600bps Protocol: Modbus
Current Balance Current Transformer Type	Tape wound or Resin cast	Moulded case or Resin cast
CBCT Standard Size Internal Diameter	Circular: 40mm,65mm,100mm,150mm,200mm 250mm & 300mm Customised Rectangular CBCTs can be provided	Circular: 40mm,65mm,100mm,150mm,200mm 250mm & 300mm Customised Rectangular CBCTs can be provided
Contact Rating	5A @ 250V AC/ 5A @ 30V DC 2C/O	8A @ 250V AC/ 8A @ 30V DC 2C/O
Mounting	Flush/Din	Flush/Din
Dimensions	Flush: 96x96x70mm (WxHxD) Din: 80x95x75mm (WxHxD)	Flush: 96x96x70mm (WxHxD) Din: 80x95x75mm (WxHxD)
Panel Cut-out(Flush)	90x90 +/- 1mm	90x90 +/- 1mm
Operating Temperature	-5 °C to +55 °C	-5 °C to +55 °C
Reference Standard	IEC 60255/ IEC 755 a) IEC-755 clause 8.3 Verification of operating characteristics(Perf. Test) b) Insulation Test IEC-60255 Insulation resistance test as per IEC-60255-cl 5&7 Dielectric test as per IEC-60255-cl 5&8 Impulse Voltage test as per IEC-60255-cl 5&8	IEC 60255/ IEC 755 a) IEC-755 clause 8.3 Verification of operating characteristics(Perf. Test) b) Insulation Test IEC-60255 Insulation resistance test as per IEC-60255-cl 5&7 Dielectric test as per IEC-60255-cl 5&8 Impulse Voltage test as per IEC-60255-cl 5&8

*Note: Relays for Mining/Solar Applications (VFD) available on request



➔ SPECIFICATIONS:

PARAMETERS	SOLID STATE EARTH LEAKAGE RELAY	DIGITAL EARTH LEAKAGE RELAY
Current Setting Range	Setting Range: EL-2D-3030: 30mA-30A EL-48-3030: 30mA-30A	Setting Range: MPEL-2D-3030: 30mA-30A
Tripping Time	Variable Time Delay: 0.1-10sec Fixed Time Delay: 100ms,500ms,1sec & 3sec	Variable Time Delay: 0.0sec - 5.0sec (Step Size: 0.05sec)
Auxiliary Voltage	85-275V AC/DC, 415V & 550V AC/DC, 50/60Hz	85-275V AC/DC, 415V & 550V AC/DC, 50/60Hz
Communication with Modbus Protocol RS485	NA	NA
Current Balance Current Transformer Type	Tape wound or Moulded case or Resin cast	Tape wound or Moulded case or Resin cast
CBCT Standard Size Internal Diameter	Circular: 40mm,65mm,100mm,150mm,200mm 250mm & 300mm Customised Rectangular CBCTs can be provided	Circular: 40mm,65mm,100mm,150mm,200mm 250mm & 300mm Customised Rectangular CBCTs can be provided
Contact Rating	5A @ 230V AC 2C/O	5A @ 230V AC 2C/O
Mounting	Flush/Din	Din
Dimensions	Flush: 50x50x106mm (WxHxD) Din: 35x91x66mm (WxHxD)	Flush: 35x91x66mm (WxHxD)
Panel Cut-out(Flush)	Flush: 45x45mm Din rail channel: 35mm	Din rail channel: 35mm
Operating Temperature	-5 °C to +55 °C	-5 °C to +55 °C
Reference Standard	IEC 60255/ IEC 755 a) IEC-755 clause 8.3 Verification of operating characteristics(Perf. Test) b) Insulation Test IEC-60255 Insulation resistance test as per IEC-60255-cl 5&7 Dielectric test as per IEC-60255-cl 5&8 Impulse Voltage test as per IEC-60255-cl 5&8	IEC 60255/ IEC 755 a) IEC-755 clause 8.3 Verification of operating characteristics(Perf. Test) b) Insulation Test IEC-60255 Insulation resistance test as per IEC-60255-cl 5&7 Dielectric test as per IEC-60255-cl 5&8 Impulse Voltage test as per IEC-60255-cl 5&8





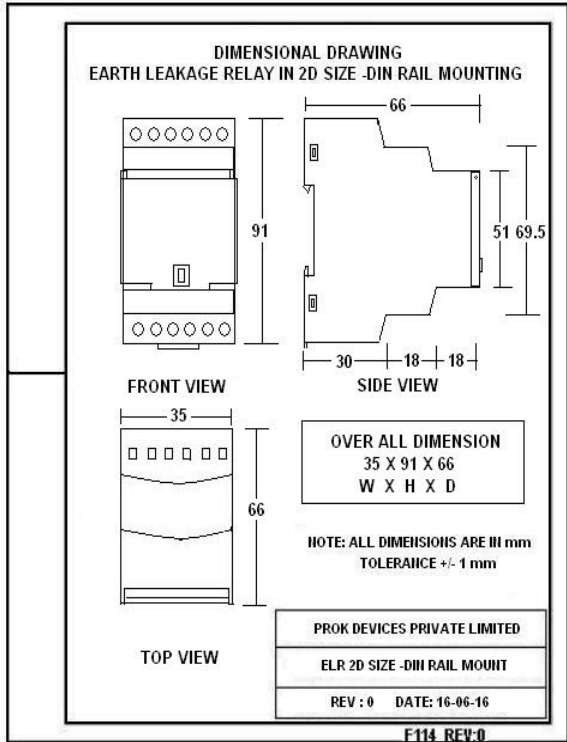
Prok dv's[®]

... a mark of quality

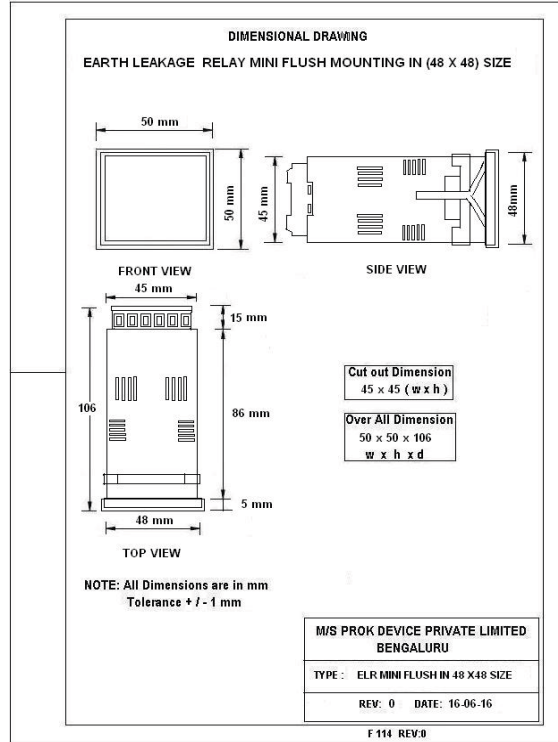
Total Reliability in Power System Protection, Monitoring & Control

ISO 9001-2015

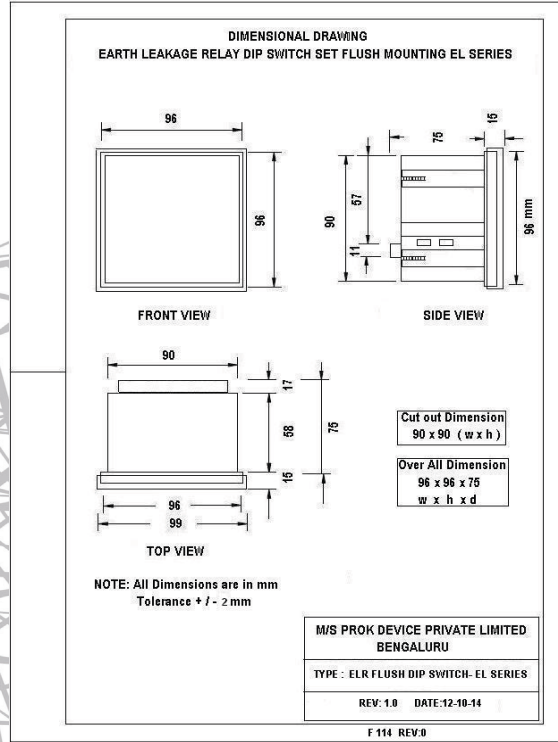
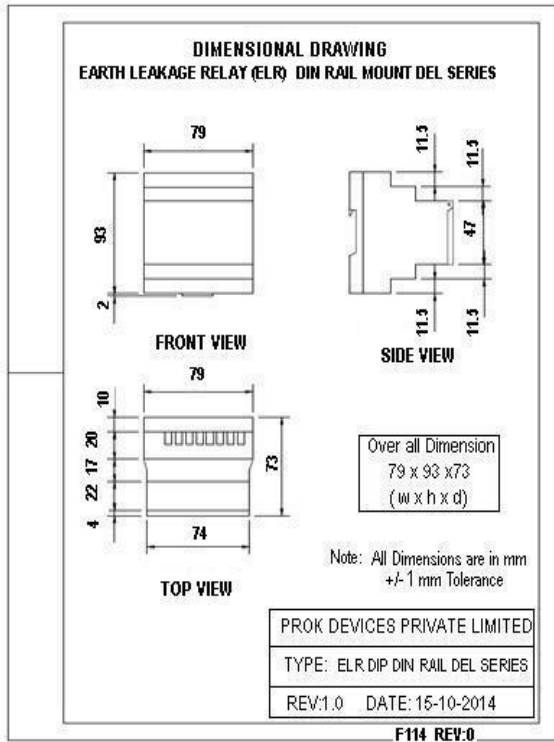
→ **DIMENSIONAL DETAILS:**



DIN Mounting



FLUSH Mounting



For more details please contact :

PROK DEVICES PRIVATE LIMITED

B-80, 2nd & 3rd Floor, KSSIDC Industrial Estate,

4th Main Road, 6th Block, Rajajinagar,

Bangalore-560010

Phn no.: 080-41480777, 41157700

Website: www.prokdvs.com

Marketing: marketing@prokdvs.com / enquiry@prokdvs.com