

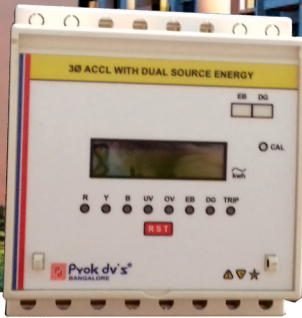
Simplifies Electrical Complexity

**Prok dv's**<sup>®</sup>  
... a mark of quality  
ISO 9001:2015



**Total Reliability in Power System Protection & Monitoring**

# ACCL



**MICROPROCESSOR BASED THREE PHASE AUTO SOURCE CHANGEOVER CUM CURRENT LIMITER WITH DUAL SOURCE ENERGY RECORDING**

## FEATURES

- Current ratings 1Amps to 63Amps continuous duty when load on EB/DG
- While monitoring the Generator supply, it allows only a limited load and functions as Load limiter as per desired current (Factory set)
- Whenever Load Current exceeds the present limit, power is automatically switched off and on automatically after 9 seconds and trips again if the overload still exists this cycle(3sec ON & 6sec OFF) is repeated every 9 sec, ACCL will enter into LOCK OUT mode after 5 ON & OFF cycles if overloading of DG still exists.
- On resumption of EB mains, ACCL automatically changes from DG to EB and allows full current. ACCL comes out of LOCK OUT mode when EB resumes
- The unit can be Reset manually by RESET switch
- The ON/OFF cycles can be set according to customer requirements (optional)
- If the unit has entered LOCK OUT mode due to OV/UV, the unit has to be reset manually.

## BENEFITS

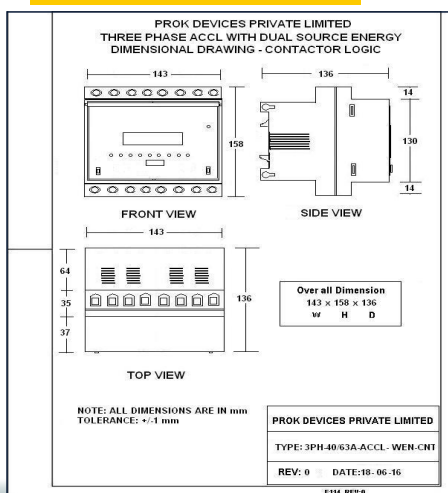
- Micro controller based True RMS measurement of load current. Hence, precise and accurate.
- Significant saving on wall space and wiring
- Tropicalized and rugged design
- LED/LCD indications for load on EB, load on DG & TRIP mode
- AC1 Heavy Duty contractors are used with mechanical and electrical interlock to ensure safety
- Different On time delays (while on DG) as per the client's requirements, so that the DGs are not loaded suddenly. This feature enhances the life of the DG and the switchgear.
- Fire Retardant Teflon wires having very high insulation levels are used in internal wiring of ACCL
- Wiring connection through highly reliable insulated feed through terminal blocks for EB mains, DG mains & Load.

# SPECIFICATIONS

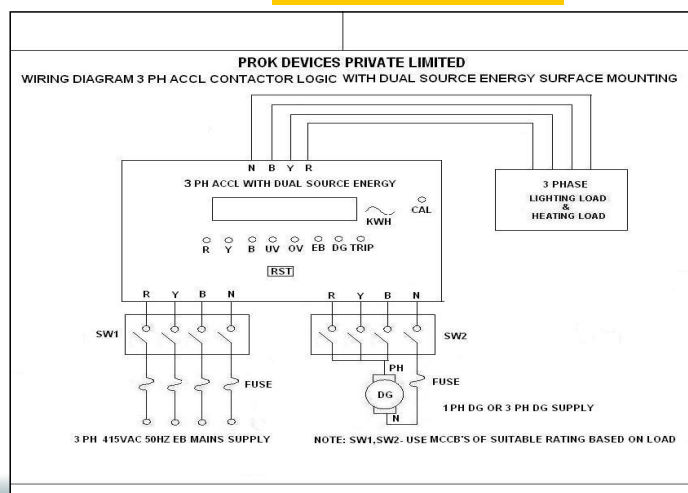
## THREE PHASE AUTOMATIC CHANGEOVER CUM CURRENT LIMITER (ACCL) WITH DUAL SOURCE ENERGY

TECHNICAL SPECIFICATIONS	THREE PHASE ACCL WITH DUAL SOURCE ENERGY
State-of-The-Art	Microcontroller Based Design
Design standard	IEC 60947-6-1
Logic incorporated	Contactor logic with Mechanical and electrical interlock up to 63A
Dimensions in mm(WxHxD) ABS	143x158x136 mm Tolerance: +/-1mm
Mounting	Din
Load On EB	User specified cut off is possible(optional)
Load on DG	User specified cut off
Models(ABS)with energy and Rs 485 communication	PACCL-3325AERS, PACCL-3332AERS, PACCL-3340AERS, PACCL-3363AERS PACCL-3125AERS, PACCL-3132AERS, PACCL-3140AERS, PACCL-3163AERS
Indications	LED indications for presence of EB & DG
Switching device	Contactor AC1 duty
No. of Electrical operational	2.1 million operations
No. of Mechanical operational	10 million operations
Degree of Protection	Ip20
Material used	ABS Fire Retardant Plastic
Energy Consumption Indication	CAL LED (1600 impulses)
Conditional Short Circuit Current	5kA
1 Terminal Wiring	upto 50sqmm
2 Operational voltage range	30% to +20% of Un
Tripping method	Whenever the load current exceeds the SET limit, power is instantaneously switched off and resets automatically after 9sec. If the overload still exists, this cycles goes on(3sec ON & 6sec OFF) repeated for every 9sec. ACCL will enter into Lock Out mode after 5 ON & OFF cycles, if over load of the DG still persists. User has to manually Reset the ACCL. Note: However, tripping cycles can be configured according to user choice
Reset method	ACCL can be Reset through Reset key provided at the front fascia of 3Ph ACCL with dual source energy
Priority selection	EB priority / DG priority can be configured at factory EB priority: Default
Under voltage/ Over voltage protection for EB	Fixed Under Voltage(160V AC)/Over voltage(250V AC) Settings can be configured at factory (optional)
Load Changeover	Automatically based on priority of Source Selection EB to DG or vice versa
Display	2 Line 16 character Back lit LCD Display 3 Phase- Voltage, Current & Total KVA, PF Lag or Lead, EB Energy, DG Energy & Trip/Lockout
Display Parameter	1. Line to Neutral Voltage in Volts, Phase current in Amps 2. Total Power in KW 3. Kilo Watt Hour-EB,DG 4. Apparent Power in KVA-EB,DG 5. Power factor-EB,DG
Warranty	18months from the Date of Manufacture or 12months from the date of invoice

### DIMENSIONAL DETAILS



### WIRING DIAGRAM



**FOR FURTHER DETAILS PLEASE CONTACT:**  
**PROK DEVICES PRIVATE LIMITED B-80,**  
**2<sup>nd</sup> & 3<sup>rd</sup> Floor, KSSIDC Industrial Estate,**  
**Bangalore-560010**  
**Ph. No.:080-41480777 | 080-41157700**

Authorised Delears: